



# SELFBRIEFING



## FATRAGLIDE

April 28 to May 7, 2024

Version 2.0

Published 22/4/2024

Martin - Slovakia

## EVENT LOCATION

Airfield: Martin  
ICAO code: LZMA  
Latitude: 490355N Longitude: 0185703E  
Elevation: 1378 ft (420m) AMSL  
Runway: 18L/36R (800m) 18R/36L (800m) grass  
Frequency: Martin traffic 120,040 Mhz

More information available on:

[https://gis.lps.sk/pdf/VFRM\\_SR\\_LZMA\\_EN.pdf](https://gis.lps.sk/pdf/VFRM_SR_LZMA_EN.pdf)

# MAIN COMPETITION OFFICIALS



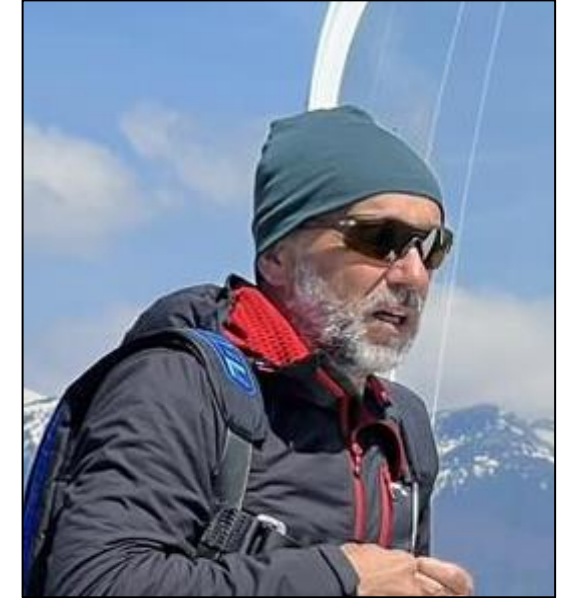
**Contest Director**  
Ivan Bajana  
+421 944 869 608



**Deputy**  
Miroslav Thémar  
+421 917 277 647



**Task setter**  
Branislav Jesenský  
+421 903 996 001



**Task setter**  
Tibor Frátrik  
+421 903 996 008

# MAIN COMPETITION OFFICIALS

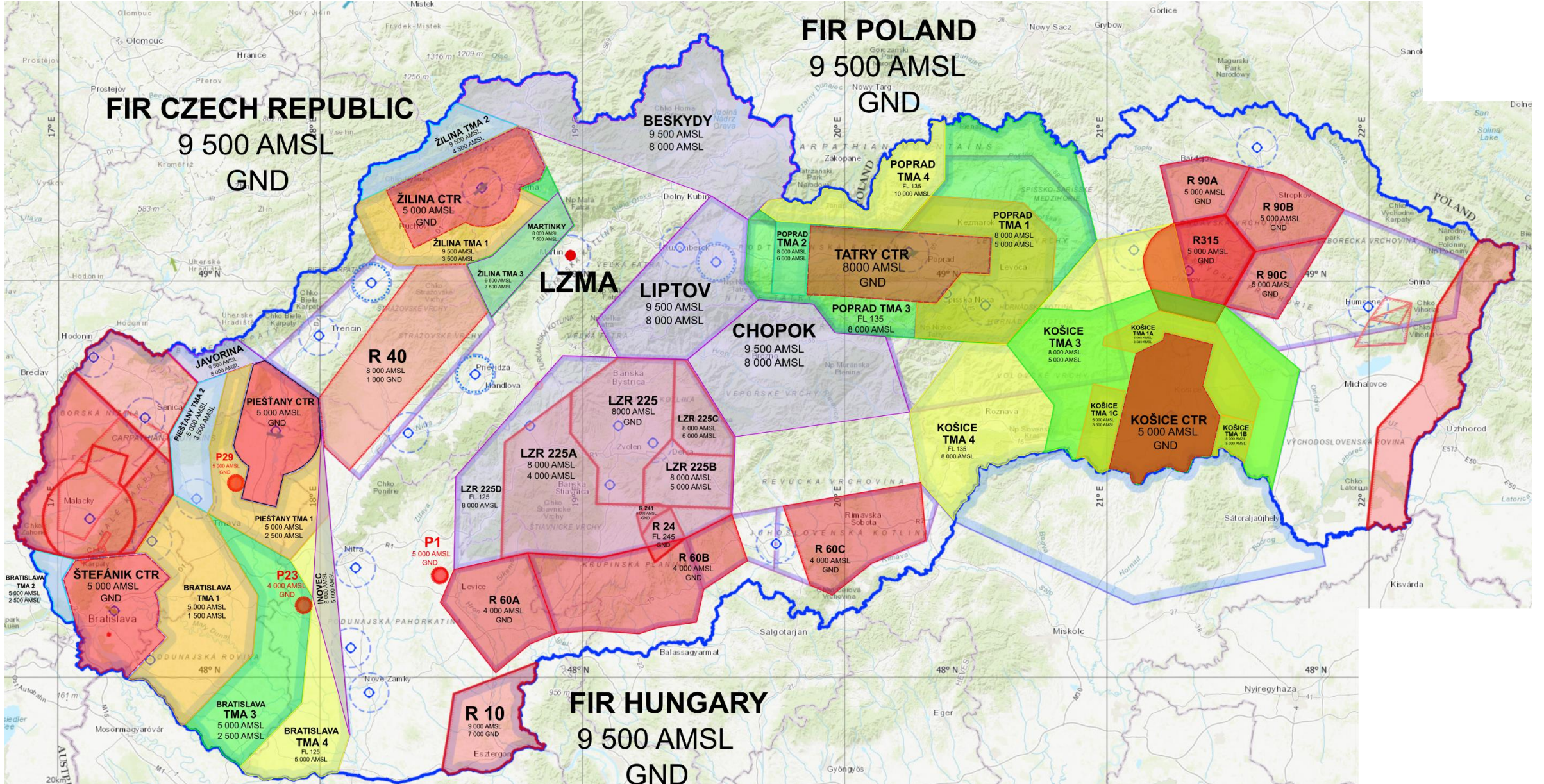


**Scorer**  
Zuzana Hrnčířiková  
+421 903 767 749

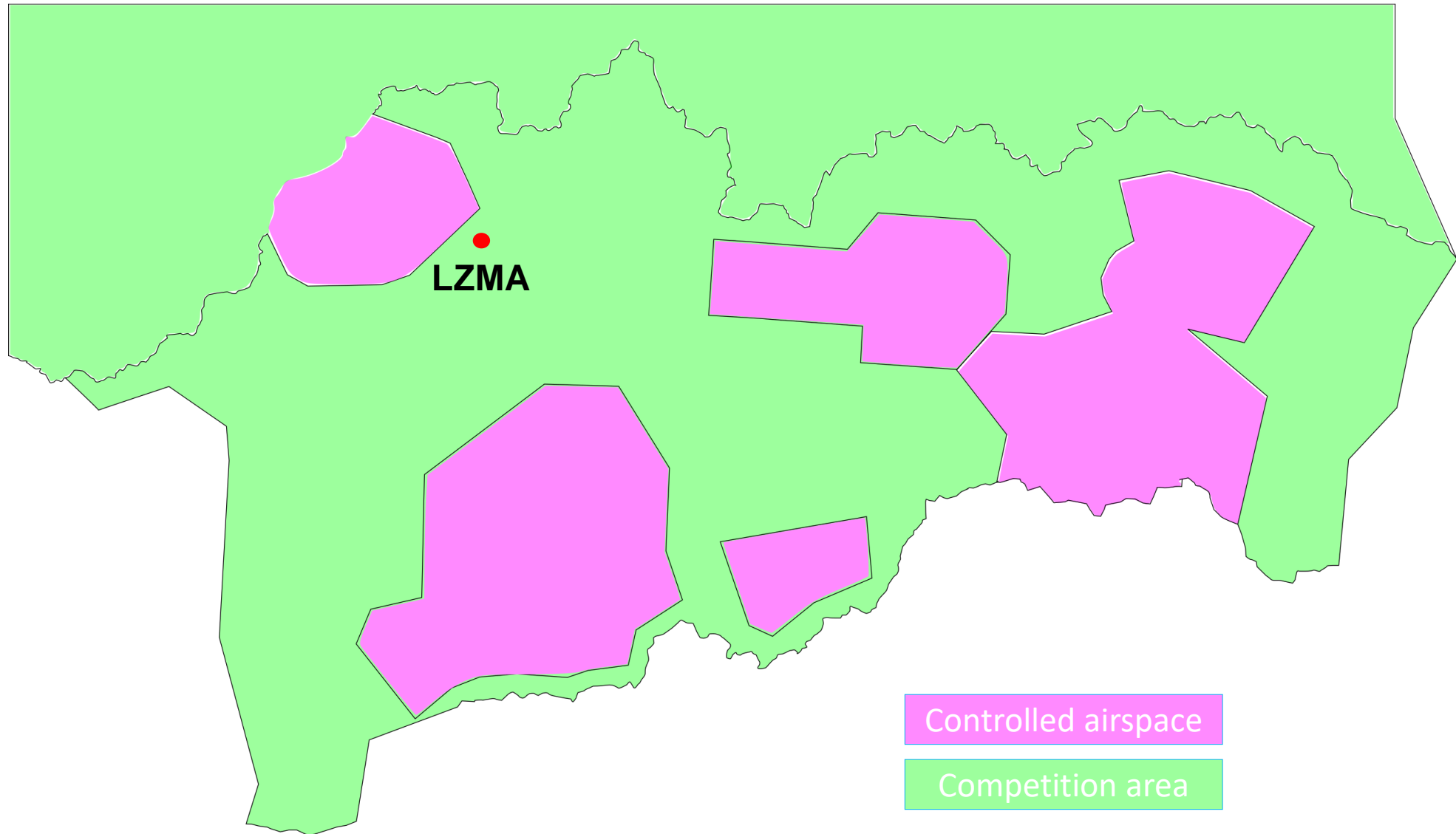


**Meteo guru**  
Jan Horák  
+420 732 226 175

# SLOVAK AIRSPACE DESCRIPTION



# CONTEST AREA



# AIRFIELD DESCRIPTION



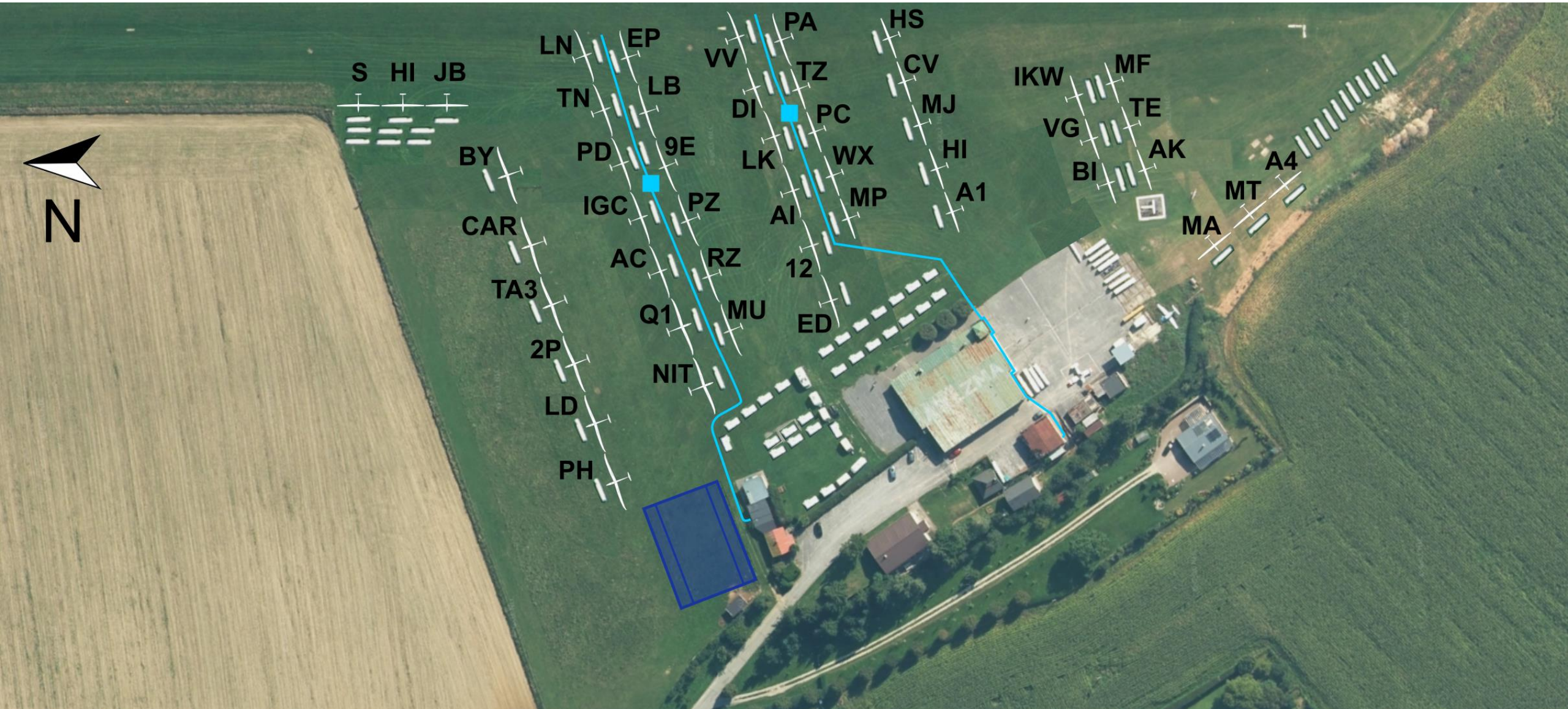
# AIRFIELD DESCRIPTION



1. Main gate, 2. Competition office, 3. Camp, 4. Briefing room, 5. Bar, 6. Airport accommodation/ WC showers  
7. WC + Showers, 8. Water, 9. Parking

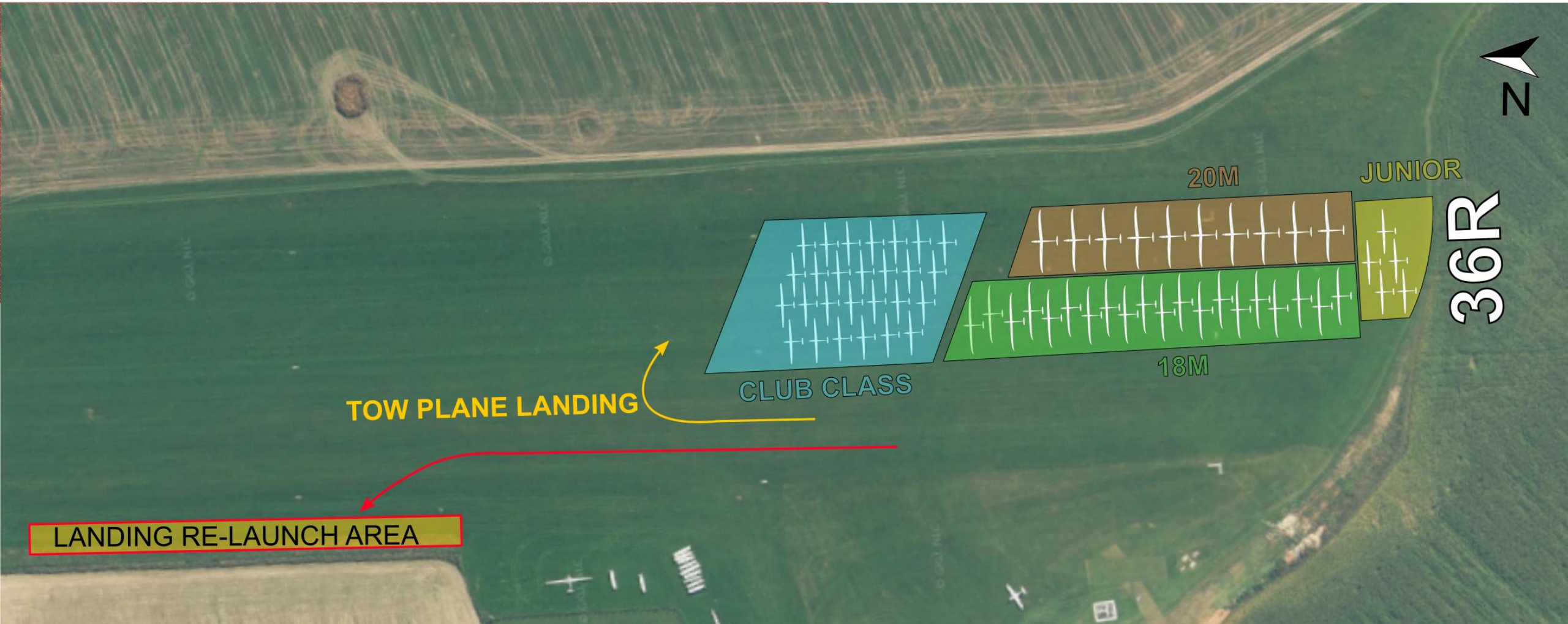


# TIEDOWN AREA DESCRIPTION



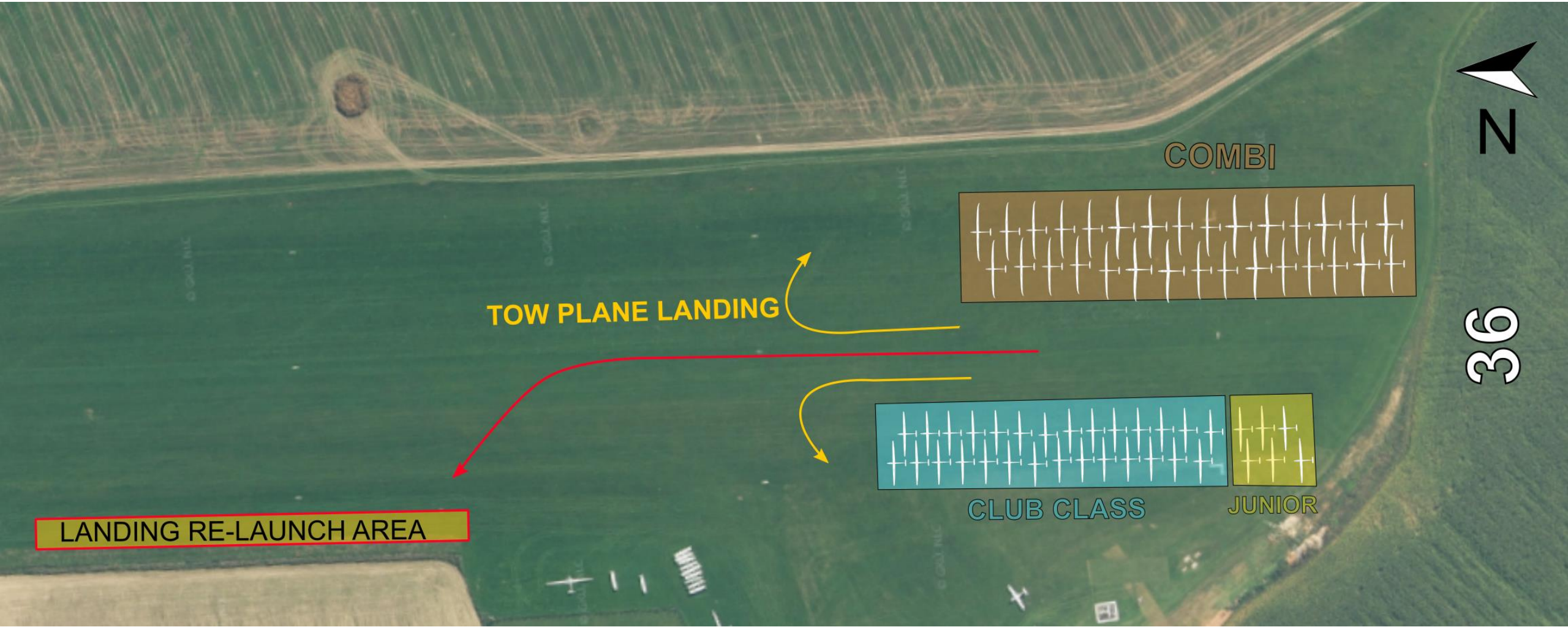
For tiedown procedure contact Contest director **Ivan Bajana** +421 944 869 608 at Main gate

# GRID RWY 36 RIGHT „A“



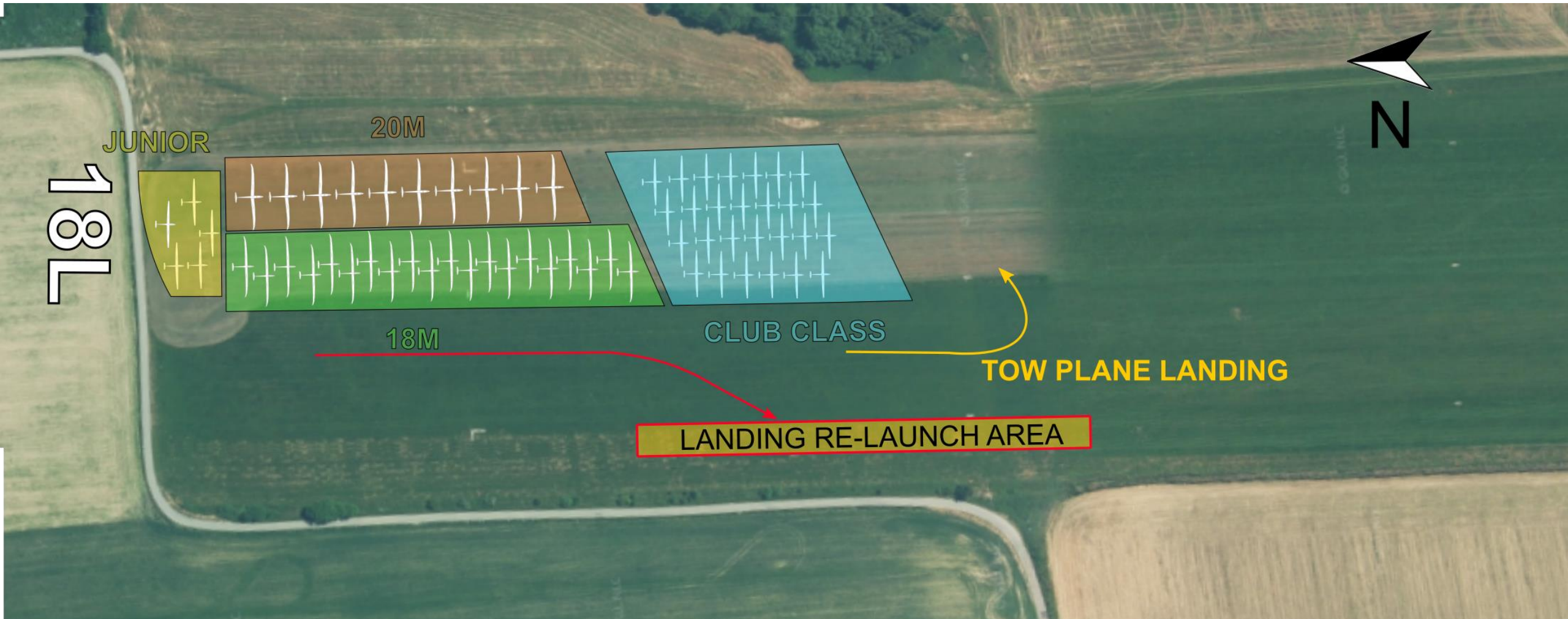
AFTER GLIDER LANDING IMMEDIATELY PUSH THE GLIDER OUT OF RWY 36  
RE-LAUNCH WILL BE POSSIBLE AFTER LAST LAUNCH OF CURRENT GLIDER CLASS

# GRID RWY 36 „B“



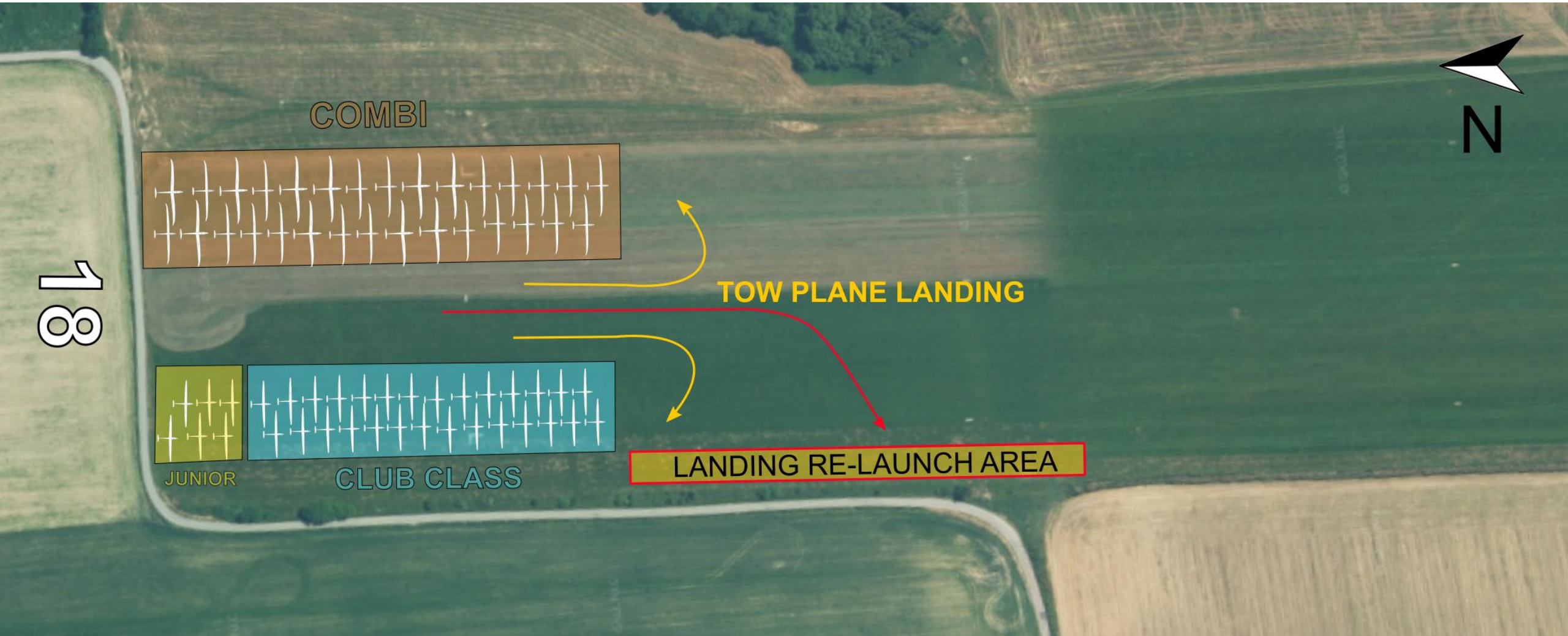
AFTER GLIDER LANDING IMMEDIATELY PUSH THE GLIDER OUT OF RWY 36  
RE-LAUNCH WILL BE POSSIBLE AFTER LAST LAUNCH OF CURRENT GLIDER CLASS

# GRID RWY 18 L „A“



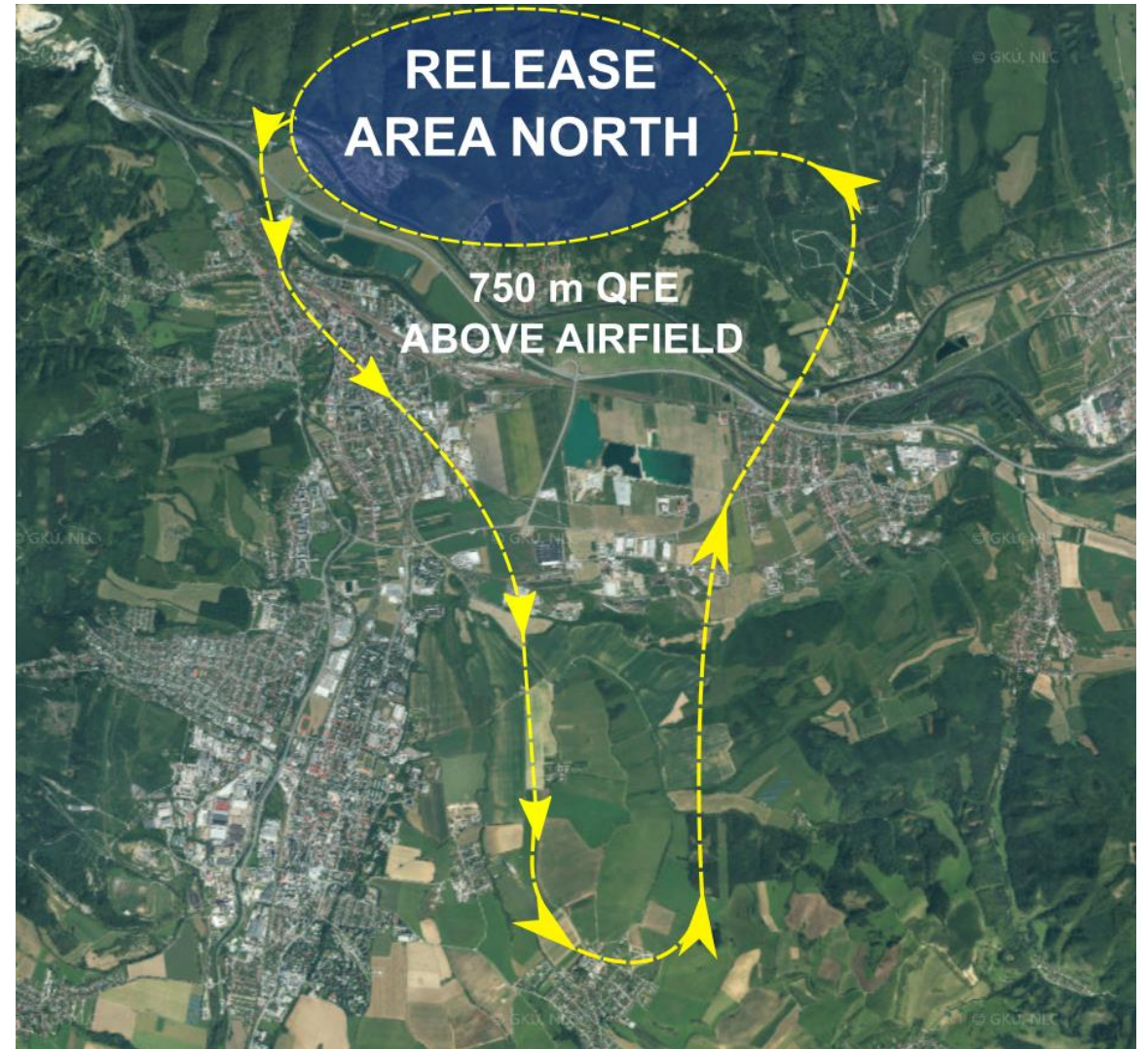
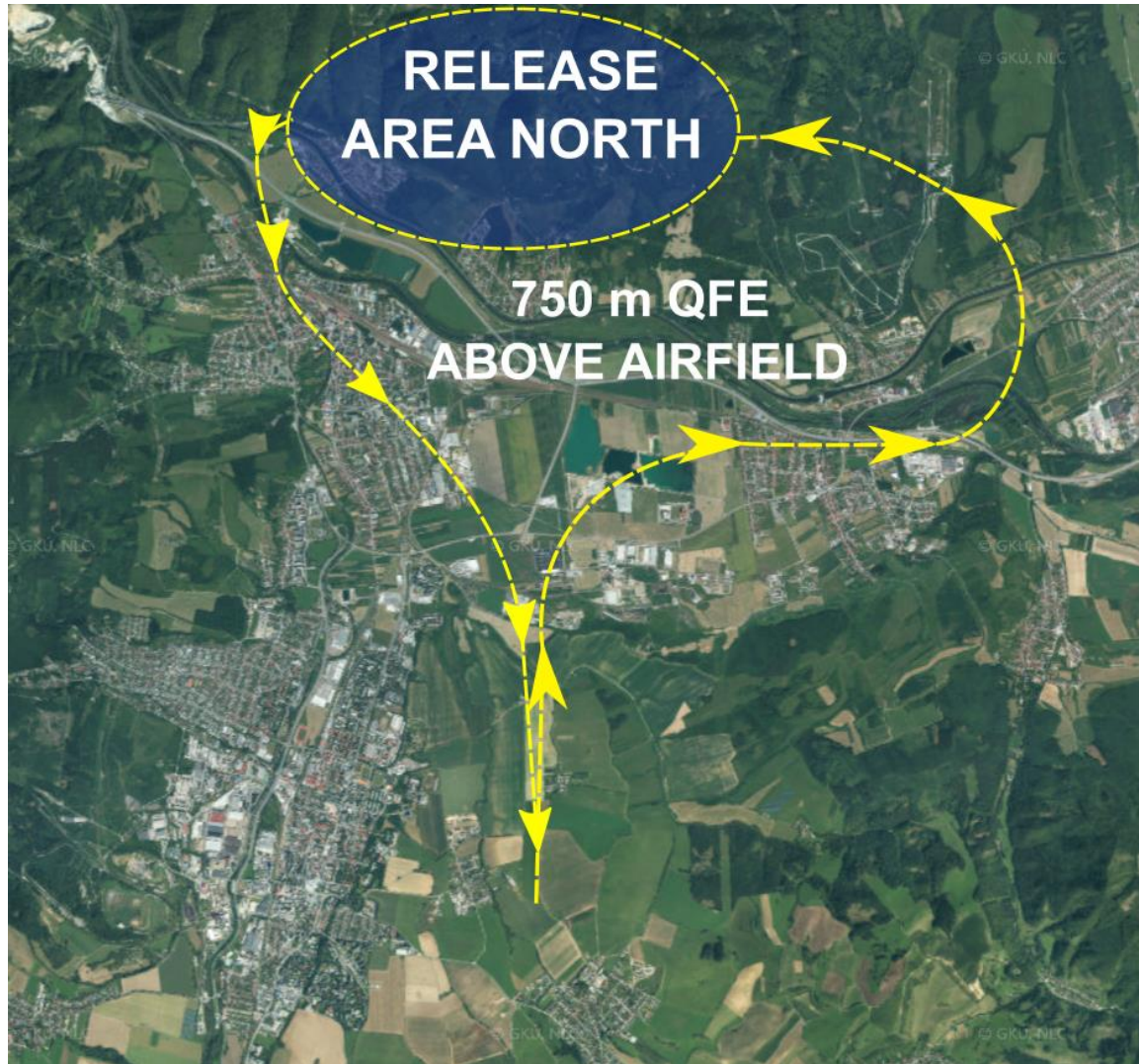
AFTER GLIDER LANDING IMMEDIATELY PUSH THE GLIDER OUT OF RWY 18  
RE-LAUNCH WILL BE POSSIBLE AFTER LAST LAUNCH OF CURRENT GLIDER CLASS

# GRID RWY 18 „A“

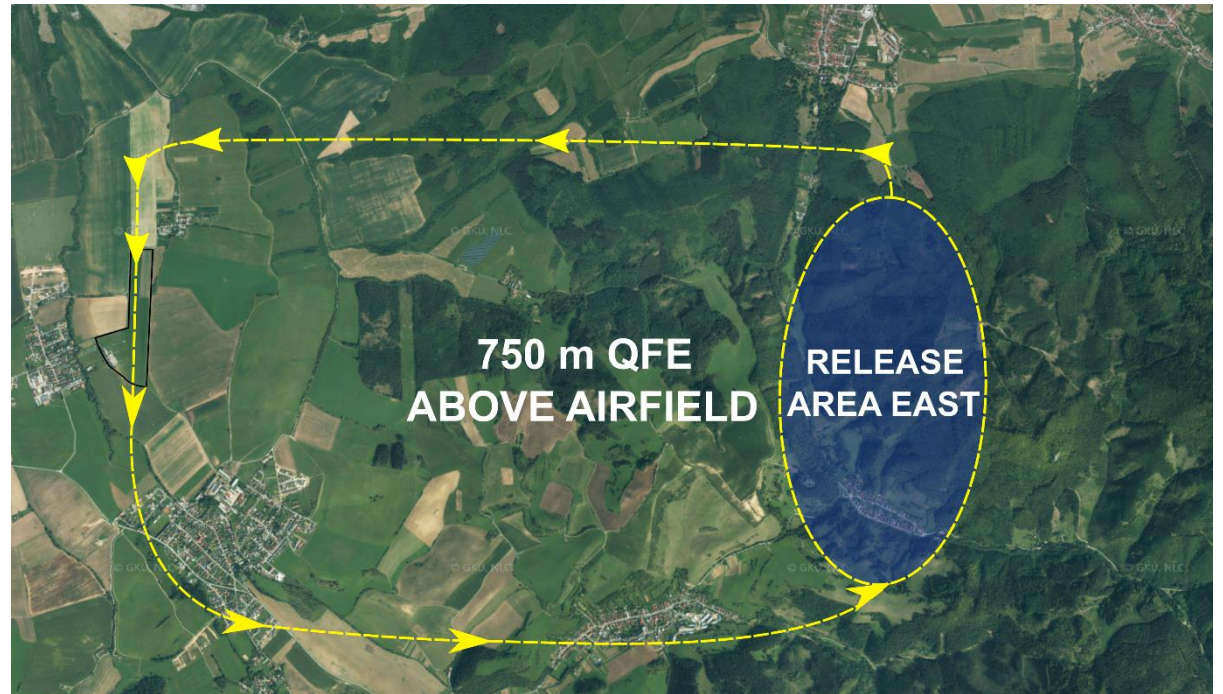
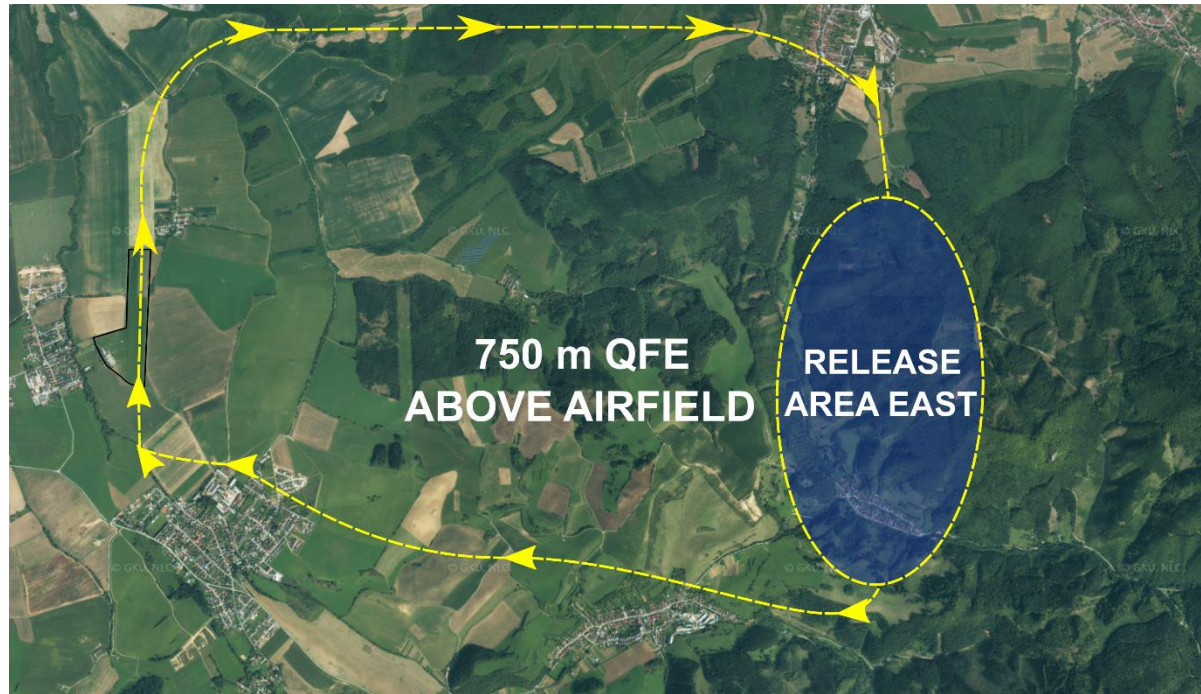


AFTER GLIDER LANDING IMMEDIATELY PUSH THE GLIDER OUT OF RWY 18  
RE-LAUNCH WILL BE POSSIBLE AFTER LAST LAUNCH OF CURRENT GLIDER CLASS

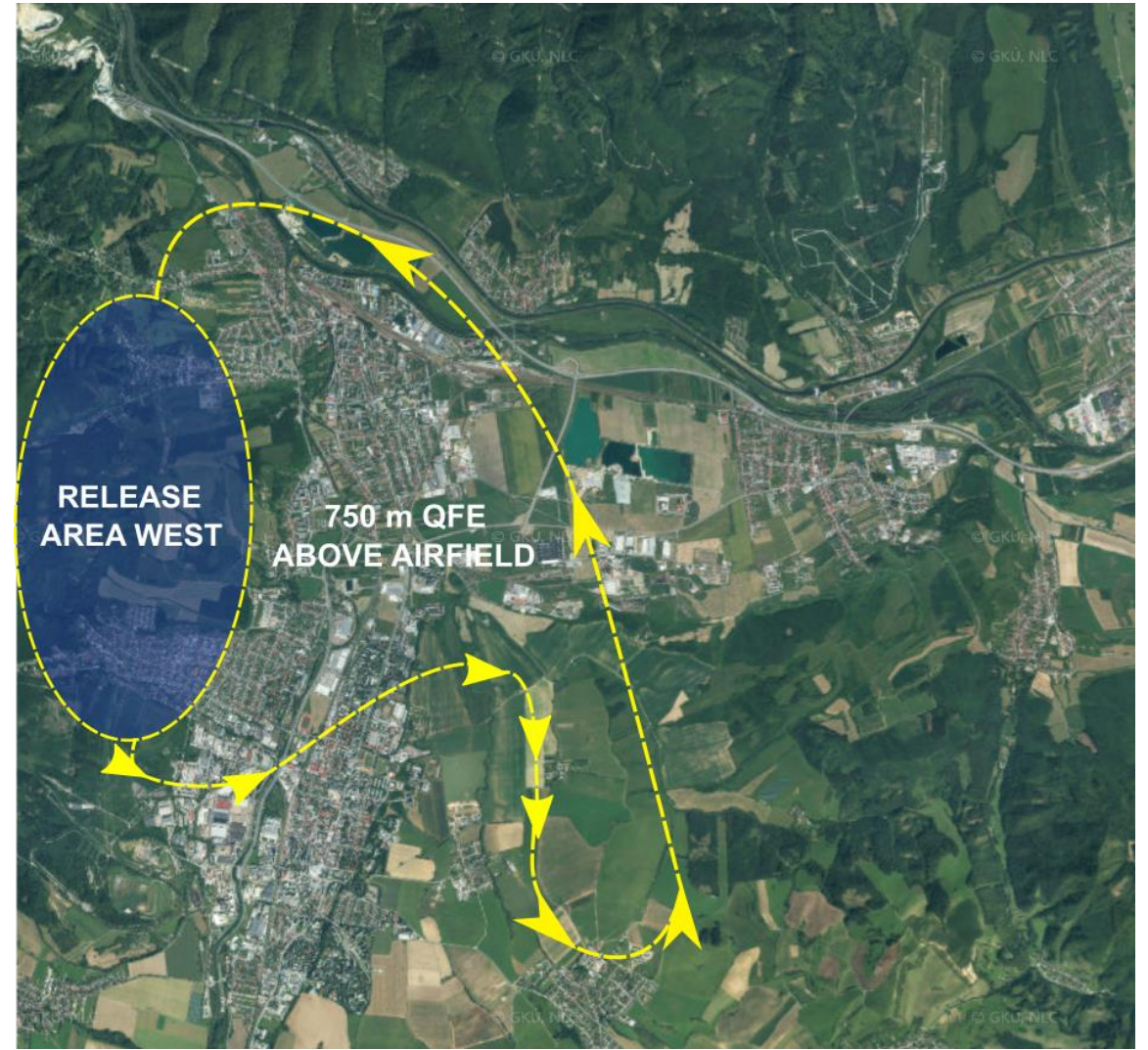
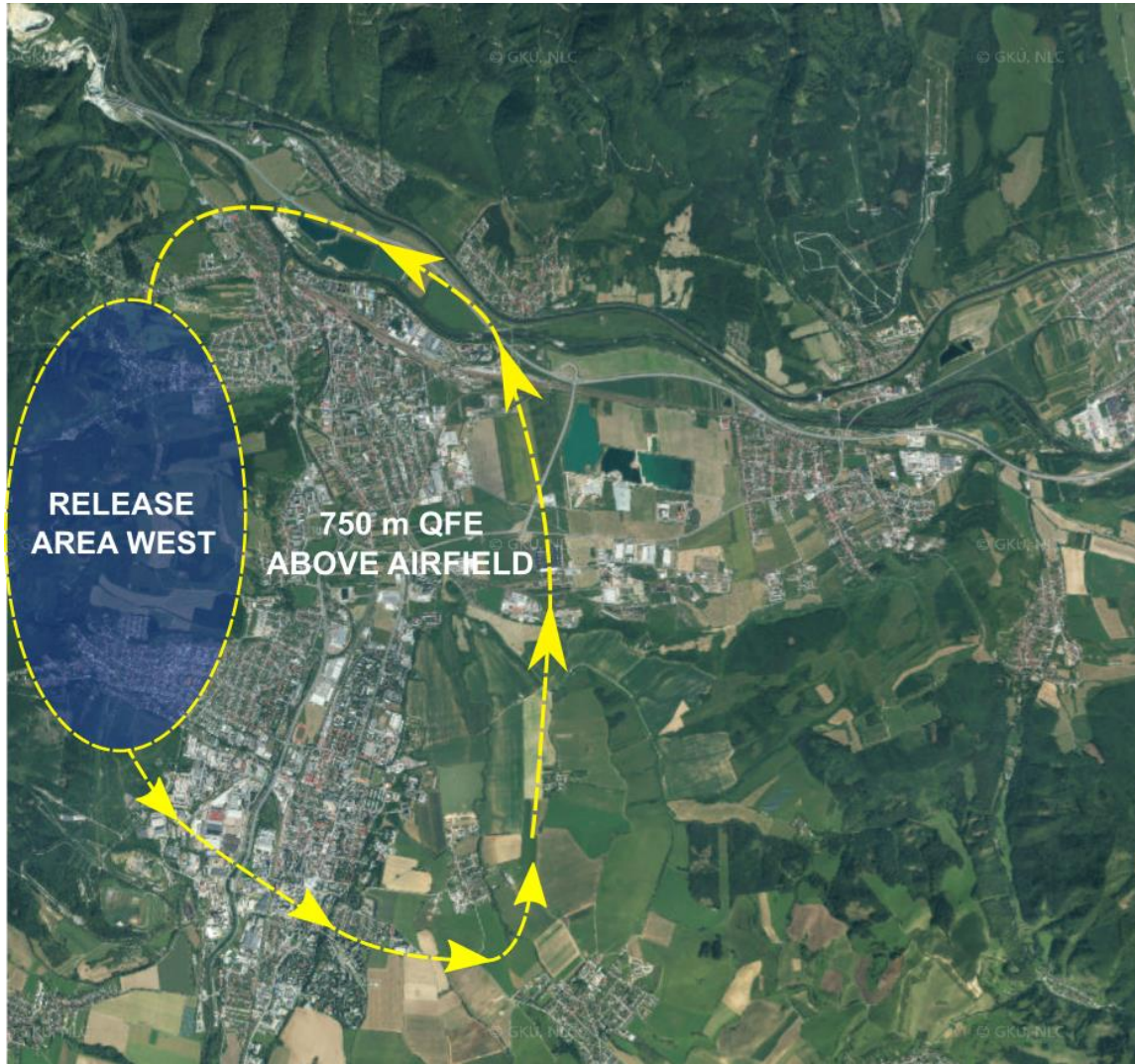
# RELEASE AREA NORTH TAKE-OFF RWY 36R/18L



# RELEASE AREA EAST TAKE-OFF RWY 36R/18L

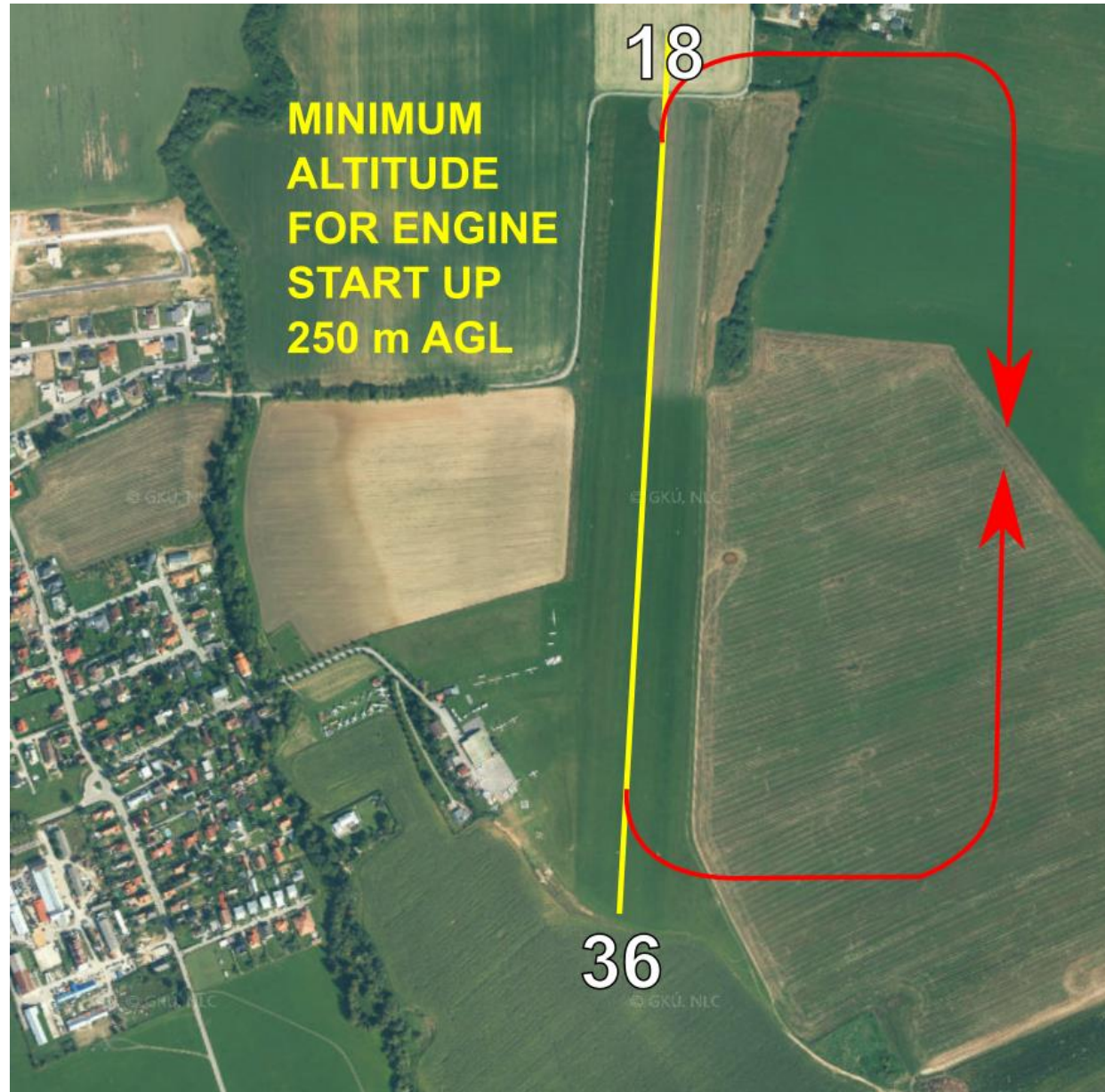


# RELEASE AREA WEST TAKE-OFF RWY 36R/18L

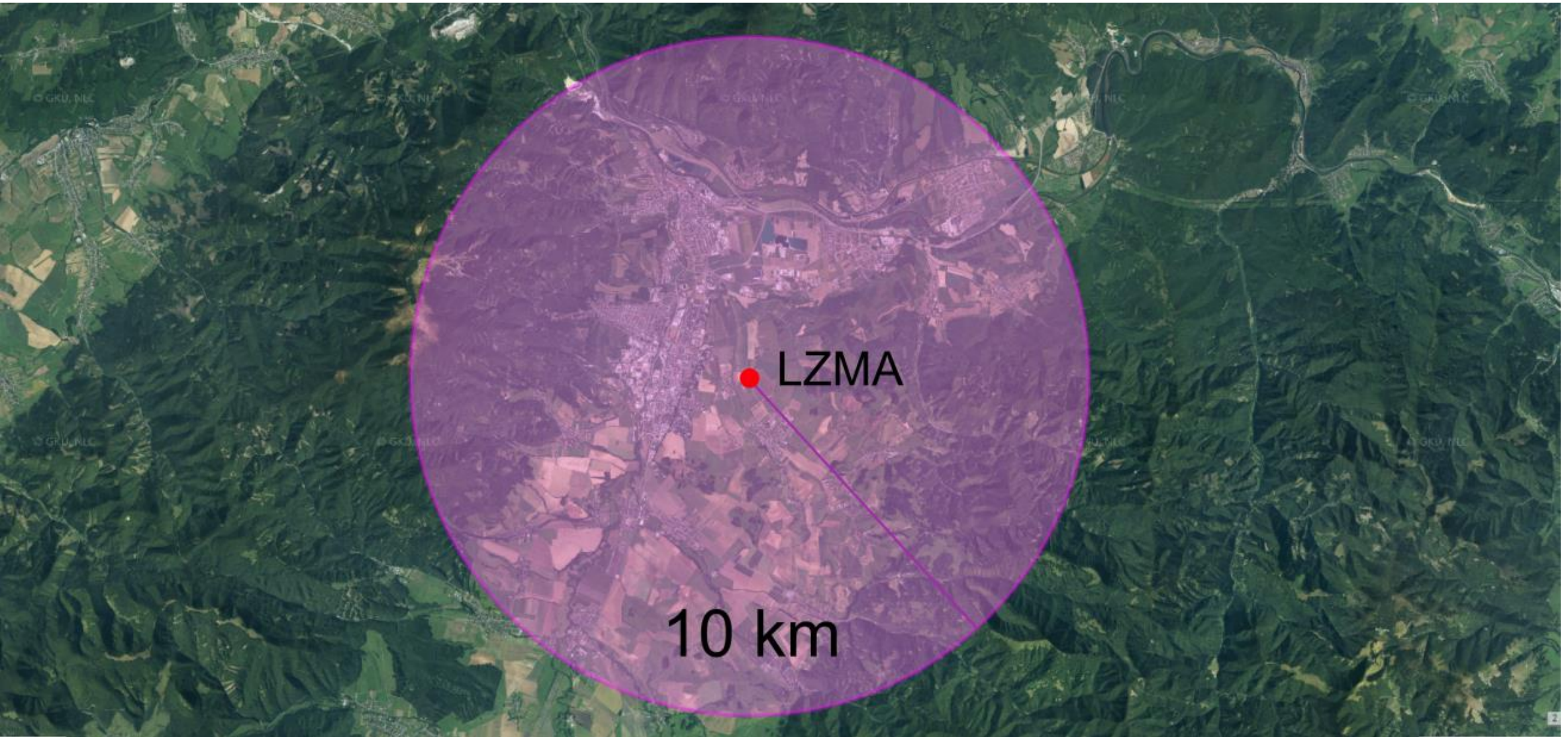




# RE TAKE-OFF PROCEDURE FOR ENGINE GLIDER

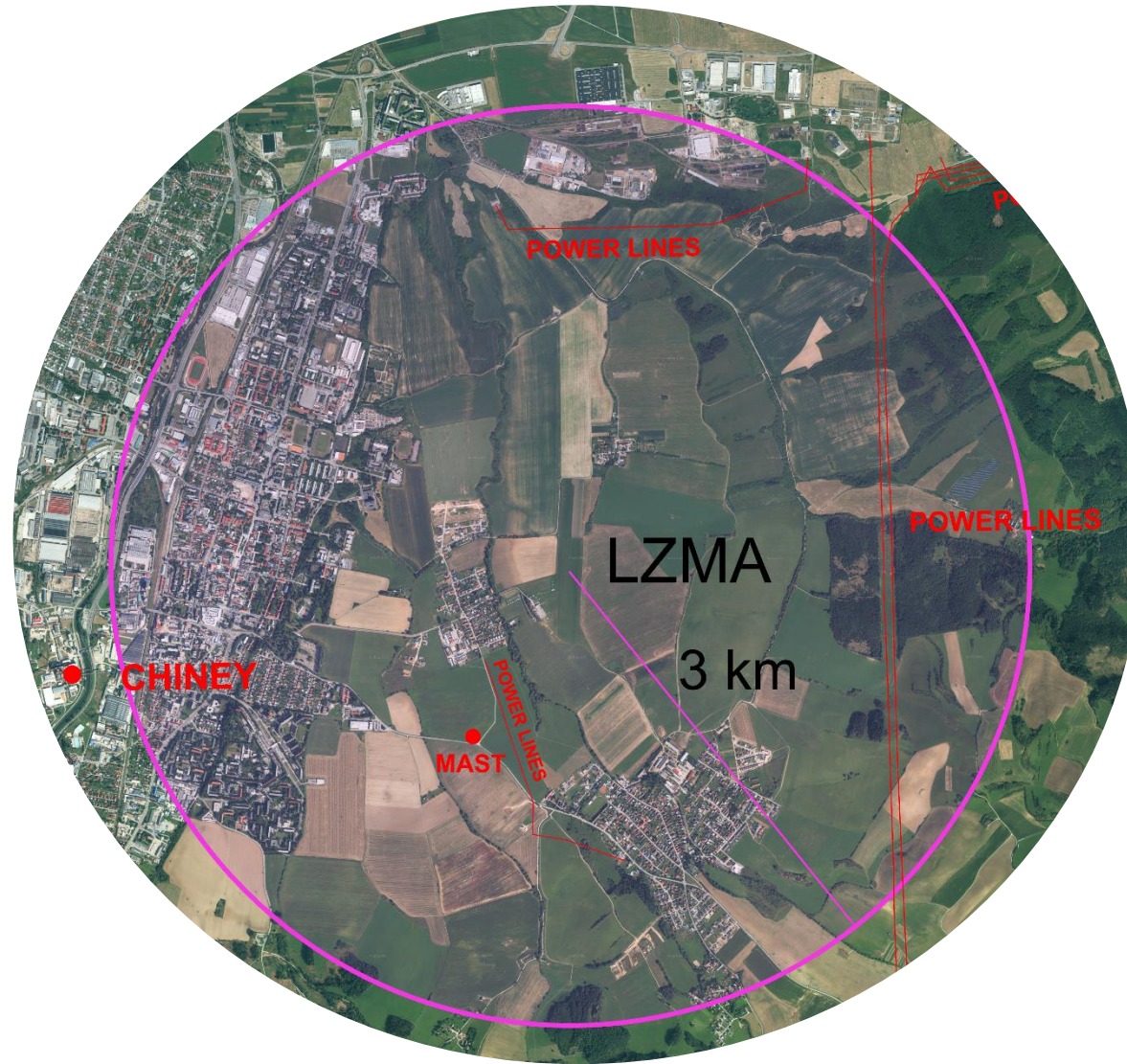


# FINISH PROCEDURE 10 KM



AT 10 km CALL MARTIN TRAFFIC ON 120,040 CONTEST NUMBER AND EXPECTED ARRIVAL DIRECTION  
„AB 10 km from SOUTH“

## FINISH PROCEDURE 3 KM



AT 3 km CALL MARTIN TRAFFIC ON 120,040 CONTEST NUMBER AND EXPECTED ARRIVAL  
„AB 3 km DIRECT LANDING“ OR „AB 3 km JOINING EAST PATTERN RWY 36“

# LANDING AREA RWY 36



TRAFFIC EAST CIRCUIT RWY 36

ALWAYS LONG LANDING

18

NO STOP AREA

36

TO TIEDOWN AREA



# LANDING AREA RWY 18



TRAFFIC EAST CIRCUIT RWY 18

ALWAYS LONG LANDING

NO STOP AREA

18

36

TO TIEDOWN AREA



## MAIN INFO SUMMARY

- **DAILY BRIEFINGS** are mandatory for all competitors
- **IGC FILE SEND** to [fatraglide24@gmail.com](mailto:fatraglide24@gmail.com) within 60 minutes after landing
- **OUTLANDING** report as soon as possible via phone number **+421 944 869 608** (Contest director Ivan Bajana)
- **TRAILERS AND GLIDERS** must be fixed and tiedown
- **START LINE** 10 KM
- **MAXIMUM ALTITUDE** at start line is **NOT SET**
- **MINIMUM ALTITUDE** at finish ring radius of 3 km is **NOT SET**
- **PEV** procedures will be announced at daily briefings
- **MAX HEIGHT** of flight **8 000 ft AMSL** or **9500 ft AMSL** in gliding area CHOPOK, LIPTOV, BESKYDY/ 10 000 ft below Poprad TMA 4
- **CARS** must be removed from the grid **at least 20 minutes** before the commence of launches
- **ORGANISERS RESERVED** the right to modify the rules during competition



**SEE YOU SOON**